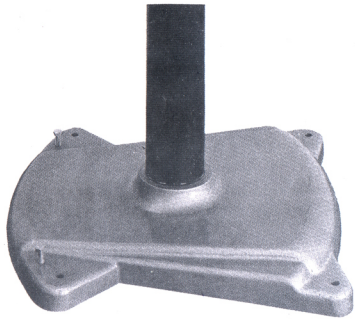
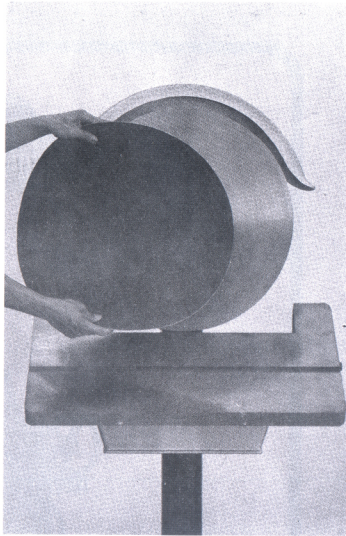


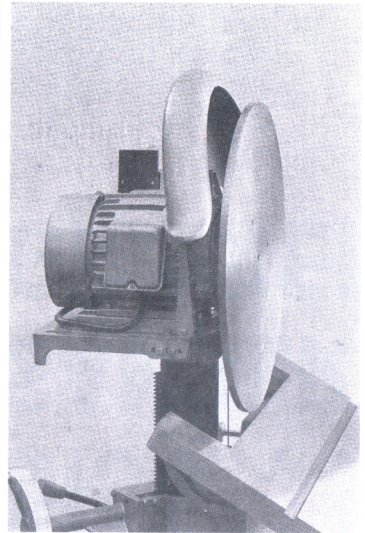
**20"
DISC
SANDER
GRINDER**



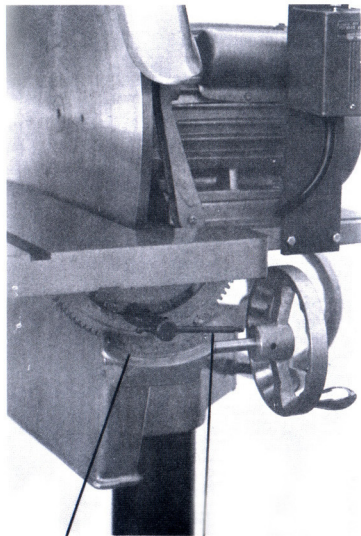
BASE



The table can be tilted 45° degrees to the right and 15° degrees to the left.

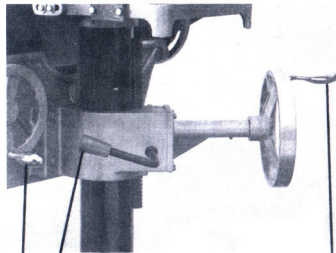


Before changing the DISC, adjusting lower the working table.



(A) To tilt the table, loosen the knob, after finished tighten it.

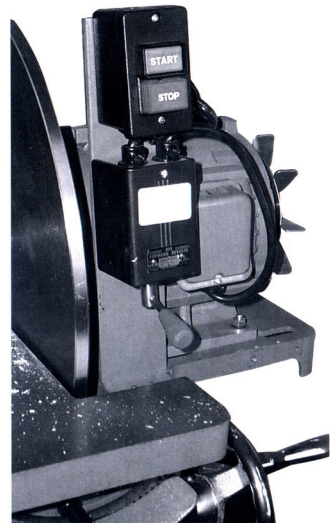
(B) Mitre Gauge



(B) To adjusting the table, loosen this knob, after finished tighten it.

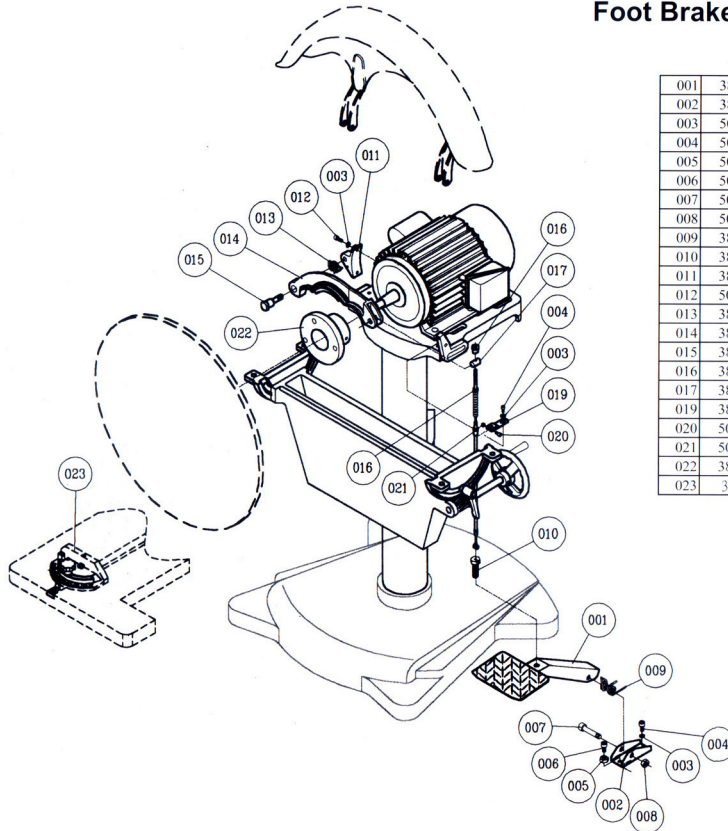
(A) Knob of tilting the table
(Table can be tilted 45°
degrees to the right and 15°
degrees to the left)

(C) Knob of adjusting the working table upper or lower



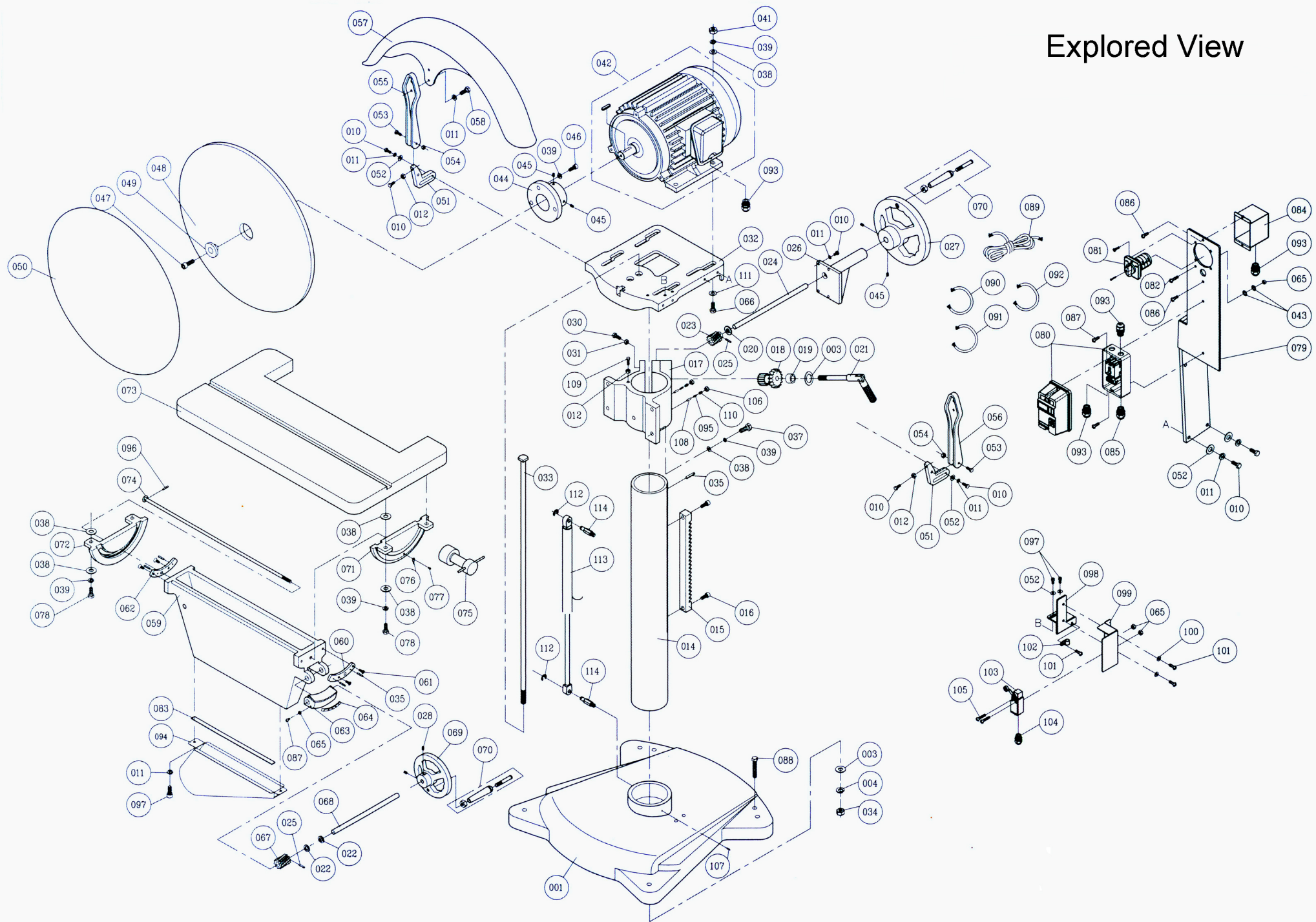
ON/OFF AND FORWARD- BACKWARD SWITCH

Foot Brake Device (Optional)



001	38013001	Foot Padal	1	
002	38013002	Padal base	1	
003	50301043	Flat washer	4	6.5*14D*1.2T
004	50152021	Cap screw	2	1/4"-20unc*1/2"
005	50251001	Hex. Nut	1	1/4"*20unc
006	50152031	CAP screw	1	1/4"-20unc*1/2"
007	50152030	CAP screw	1	3/8"-16unc*2"
008	50252001	Nylon nut	1	3/8"-16unc
009	38013003	Spring	1	
010	38013012	Bolt	1	
011	38013004	Connector	1	
012	50152002	CAP screw	1	
013	38013005	Spring	1	
014	38013006	Draw bar	1	
015	38013007	Center rod	1	
016	38013010	Brake wire	1	
017	38013009	Stop	1	
019	38013011	Wire clip	1	
020	50152039	Wire	1	
021	50252003	Hex. nut	1	
022	38011027	Adapter	1	
023	38012101	Miter gauge assembly	1	Optional

Explored View



NO.	PART NO.	DESCRIPTION	Q'TY	SPECIFICATION
001	38011001	Base	1	
003	50351015	Flat washer	2	1/2"*32*3t
004	50352014	Spring washer	1	1/2"
010	50151068	Fixed screw		1/4*20unc*1"L
011	50302002	Fixed washer	16	1/4"
012	50251001	HEX.nut	5	1/4*20unc
014	38011009	Column	1	
015	38011010	Rack	1	
016	50152023	CAP screw	2	5/16"*18UNC*1/2"L
017	38011011	Cover& support	1	
018	38011012	Worm gear	1	
019	38011013	Washer	1	
020	50301019	Fixed washer	1	13*28.4*1.5t
021	38011101	Up&Down hand.set	1	
022	38011016	Washer	2	
023	38011017	Worm,table lifting	1	
024	38011018	Shaft	1	
025	50602019	Spring pin	3	4*20mmL
026	38011019	Shaft base	1	
027	38011020	Handle wheel	1	
028	50153009	SET screw-	3	5/16"*18unc*3/4"L
029	38011021	Handle	2	
030	50151056	HEX.screw	1	5/16"*18unc*1-3/4"L
031	50251003	HEX. nut	1	5/16"-18unc
032	38011022	Motor mount	1	
033	38011023	Stud bolt	1	
034	50251016	HEX. nut	1	1/2"*12UNC
035	50602041	Spring pin	5	5*16mmL
037	50151091	HEX. Screw	4	3/8"*16UNC*1-3/4"L
038	50301051	Flat washer	12	3/8"*23*2t
039	50352004	Spring washer	14	3/8"
040	50151005	Set. screw	1	1/4"-20UNC*5/8"L
041	50251023	HEX.nut	5	3/8-16unc
042	38011502	Motor	1	2hp*220v*60c*1ph
042.1	38011511	Motor	1	3hp*220v*60c*3ph
043	50303003	Teeth washer	2	M5
044	38011027	Hub	1	
045	50153009	SET screw	4	5/16"*18UNC*3/4"L
046	50152040	HEX. screw	3	3/8"*16UNC*7/8"L
047	50152003	CAP screw	1	1/4"*20unc*3/4"L
048	38011028	Disc	1	
049	38011029	Clamp block	1	
050	38011030	Sanding cloth	1	
051	38011031	Guard bracket	2	
052	50351068	Flat washer	9	1/4"*19*2t
053	50151104	Hex.screw	2	1/4"*20unc*1-1/4"L

054	50252023	Nylon nut	2	1/4"*20unc
055	38011032	L. H guard arm	1	
056	38011033	R.H guard arm	1	
057	38011034	Disc guard	1	
058	50151005	Hex. screw	4	1/4"*20unc*5/8"L
059	38011035	Solid segment	1	
060	38011036	Pilot	1	
061	50158004	Screw	4	1/4"*20unc*1/2"L
062	38011037	Pilot	1	
063	38011038	Scale indicator	1	
064	38011039	protractor	1	
065	50251033	Hex.nut	4	3/16"*24unc
066	50151097	Hex.screw	1	3/8"*16unc*1-1/2"L
067	38011040	Worm,table tilt	1	
068	38011041	shaft	1	
069	38021007	Hand wheel	1	
070	34013101	Handle set	2	
071	38011043	Gear segment	1	
072	38011044	Table fixer	1	
073	38011045	Table	1	
074	38011046	Fixed pin	1	
075	38011047	Scale set knob	1	
076	35011016	Scale indicator	1	
077	50104010	Round head screw	1	M4*0.7p*6L
078	50151020	Hex. screw	4	3/8"*16unc*1"L
079	38012007	Switch plate-long	1	
080	38011608	Magnetic switch	1	2hp*220v*60c*1ph
080.1	38011613	Magnetic switch	1	3hp*220v*60c*3ph
081	3801160c	Switch control	1	
082	50154043	Round head screw	1	3/16"*24unc*5/8"L
083	23042008	Polyfoam	2	
084	38012008	On/off switch cover	1	
085	51104016	Wire protector	8	PG 13.5 (8CE)
086	50154039	Round head screw	1	3/16"*24unc*3/8"L
087	50154031	Round head screw	3	3/16"*24unc*3/4"L
088	50101044	Round head screw	2	M12*1.75P*80L
089	3801180a	Power cord	1	
090	3801170a	Motor cord	1	
091	38011090a	Switch cord	1	
092	38011090d	Wire , limit switch	1	
093	51104008	Wire protector	4	
094	38012006	Dust chute	1	
095	38011092	Spring	2	
096	50602004	Spring pin	1	3*20L
097	50152001	CAP screw	4	1/4"-20UNC*3/8"L
098	38012009	Bracket, limit switch	1	
099	38012010	Cover, limit switch	1	
100	50351046	Flat washer	2	3/16"*12*1t
101	50154047	Round head screw	3	3/16"-24UNC*1/4"L

102	51110001	Wire , clip	1	ACC-2.5 (7.8mm)
103	34016003	Limit switch	1	
104	51104009	Wire protector	1	PG 11
105	50154038	Round head screw	2	3/16"-24UNC*1 1/4"L
106	50251035	Hex. Nut	2	5/16"-18UNC
107	50602017	Spring pin	1	5*25L
108	38011091	Lock Pin	2	
109	50151103	Hex. screw	1	1/4"-20UNC*3/4"
110	50153015	SET screw	2	5/16"-18UNC*1"
111	50351067	Flat washer	4	3/8"*28*2t
112	50403001	C ring	2	ETW-7
113	38021004	Air cylinder	1	
114	23021012	fix shaft, cylinder	2	

WARNING

- Installation, operation, and maintenance of your sander must be done in accordance with all codes and acts for your personal safety. Trained and experienced equipment installers should install the machine.
- Keep the floor area around the machine clean and free of chips, liquids, stock material or anything else that may prevent the operator from using the machine safely.
- Disconnect machine from electrical power before performing any maintenance.
- Check that the power switch is in the OFF position before connecting machine to power.
- Give your work your full attention. Horseplay, looking around, and carrying on a conversation while using the machine are careless acts that can result in serious injury.
- Keep this manual and all maintenance records handy for operators and maintenance technicians.
- Remove adjusting keys and wrenches after making adjustments.
- Avoid working in a dangerous environment. Don't use power tools in damp or wet locations or expose them to rain. Work only in a well lit area.
- Don't force tool. It will do the job better and safer at the rate for which it was designed.
- Wear proper apparel. Do not wear loose clothing, gloves, neckties, or jewelry as they may get caught in moving parts. Non-slip footwear is recommended. Wear protective hair covering to contain long hair.
- Use safety glasses. Also, use face or dust masks if cutting operation is dusty. If eyeglasses only have impact resistant lenses, they are not safety glasses.
- Stop machine to remove chips and scrap.
- Disconnect tools before servicing and when changing accessories such as sanding cloth.
- Don't operate tool while under the influence of drugs, alcohol, medication or fatigued.
- Never leave a tool running unattended. Turn power off and don't leave tool until it comes to a complete stop.